



Liberia Regional Design & Construction Group

Paynesville – Joe Bar – Montserrado County

Tel: +231-777599354/+231-775799326/+231-886599354

PROGRESS REPORTS ON IMPROVEMENT OF THE UROLOGY DEPARTMENT AT THE ST. JOSEPH’S CATHOLIC HOSPITAL, MONROVIA-LIBERIA



PREPARED BY: LRDCG TECHNICAL TEAM



Liberia Regional Design & Construction Group

Paynesville – Joe Bar – Montserrado County

Tel: +231-777599354/+231-775799326/+231-886599354

SUMMARY

The Urology Center construction project, being carried out by the Liberia Regional Design and Construction Group, is advancing rapidly at the St. Joseph Catholic Hospital in Oldest Congo Town, Liberia. The contractor's dedication and adherence to safety protocols, along with the proper execution of all construction activities in line with the approved design, drawings, and specifications, have enabled the successful completion of the foundation, the ground-floor superstructure block work, the casting of the overhead slab, and up to the upper-floor superstructure block work. Since the project officially began on October 29, 2025, following the agreement between the St. Joseph Catholic Hospital administration, the funding agency, and the Liberia Regional Design and Construction Group, steady and significant progress has been achieved. This advancement is the result of LRDCG's administrative and technical teams, along with its technicians, effectively applying the project's management strategies, including labor and material mobilization, work execution, and continuous supervision. Upon completion, the modern Urology Center will offer comprehensive diagnosis, treatment, and management of conditions affecting the male and female urinary tract, as well as the male reproductive system in Liberia. It will operate with full administrative capacity and complete clinical functions, including a nursing station, consultation rooms, a Uru-diagnostic area, operating theaters, and recovery rooms.

The roofing phase of the building is set to begin, with all necessary roofing materials already mobilized and waiting for transfer of funds to be delivered on the site. Workers will be fully deployed for immediate execution, equipped with proper PPEs, and construction safety signs will be installed throughout all active work areas. Once the roofing work is fully completed, the project will move into continuous construction activities on both the ground and upper floors, including interior and exterior plastering, installation of doors and windows, tiling, electrical and plumbing fixture installation, as well as painting and final finishing. This phase of the project is particularly critical due to the extensive work required on both the ground and upper floors, the substantial quantity of materials that must be supplied, and the level of technical supervision needed to ensure the project maintains its expected pace of progress. The **Liberia Regional Design and Construction Group** remained committed to carry out the construction of the Urology Center both administratively and technically in accordance with the signed contract, drawings and



Liberia Regional Design & Construction Group

Paynesville – Joe Bar – Montserrado County

Tel: +231-777599354/+231-775799326/+231-886599354

specifications and with full compliance to all national and international standards of construction.

The Liberia Regional Design and Construction Group has continued to demonstrate its commitment to constructing the Urology Center by managing both the administrative and technical aspects of the project in full alignment with the signed contract, approved drawings, and specifications, while adhering to all national and international construction standards.

See figures below of the current status of the project,



CURRENTLY WORK IS HOLD AWAITING THE CURING OF COLUMNS, LINTELS & BEAMS



Liberia Regional Design & Construction Group

Paynesville – Joe Bar – Montserrado County

Tel: +231-777599354/+231-775799326/+231-886599354

The completion of the ground-floor and upper-floor superstructure block walls, partitions, and the casting of all extension columns, beams, and lintels demonstrates the strong commitment of the funding agency and the administration of St. Joseph Catholic Hospital. Their collaboration with the Liberia Regional Design and Construction Group’s technical team has driven the significant progress achieved since the project began.

The Technical Team of **Liberia Regional Design and Construction Group** mobilized the below listed manpower, tools and equipment for full construction activities of the superstructure.

Manpower	Tools	Equipment
Manager ----- 01	- Shovel 8, wheel borrow 6	Toyota Tacoma Pick-up 1
Engineer ----- 01	- Steel cutter 2, Concrete Cutter – 2,	Concrete Mixer 1
Supervisor ----- 01	- Digger – 6, Trowel- 4, Head pan 6,	Concrete Cutter 1
Mason-----05	- Bucket 5, Carp hammer 4,	
Carpenter ----- 04	- Handsaw 6, pound hammer 2,	
Steel Bender ----04	- Spirit level 4, Measuring Tape – 4	
Helper-----08	- Building Line - 8	

The project has reached 72.61% overall completion, based on the detailed scope of work. This progress reflects the full completion of the foundation, the ground- and upper-floor superstructure block work, all room partitions, door and window openings, the casting of the staircase, and the overhead slab, reinforced beams and columns for the upper floor.

See chart below of the proposed construction works status of the **Urology Center**.

SUPERSTRUCTURE COMPLETED WORKS (GROUND & UPPER FLOOR)	SUPERSTRUCTURE OUTSTANDING WORKS (GROUND & UPPER FLOOR)
<ul style="list-style-type: none"> ○ Mobilization of Labor/Materials ○ Foundation Works ○ Masonry Block works/partitioning ○ Reinforcement beams & columns installation ○ Reinforcement slab casting ○ Stairs case casting ○ Rough Electrical works ○ Rough Plumbing works 	<ul style="list-style-type: none"> ○ Roof and Ceiling installation ○ Interior and exterior plastering ○ Installation of doors and windows ○ Installation of electrical and plumbing fixtures and fittings ○ Installation of wall and floor tiles ○ Installation of ceiling as require ○ Painting and finishing works



Liberia Regional Design & Construction Group

Paynesville – Joe Bar – Montserrado County

Tel: +231-777599354/+231-775799326/+231-886599354

Work on the site is currently paused to allow the reinforced columns, beams, and lintels to properly cure, following the completion of the upper-floor superstructure, including block wall partitioning and all reinforced elements. Once the curing period is satisfactorily completed, construction will resume on both the ground and upper floors with the installation of doors and windows, plumbing and electrical systems, tiling, painting, and final finishing works.

See figures below of superstructure works:

UPPER FLOOR BLOCK WORK & PARTITIONS





Liberia Regional Design & Construction Group

Paynesville – Joe Bar – Montserrado County

Tel: +231-777599354/+231-775799326/+231-886599354

The upper-floor rough masonry work for the St. Joseph Catholic Hospital Urology Center has been successfully completed by the Liberia Regional Design and Construction Group’s technical team within the contract time-frame.

UPPER FLOOR BLOCK WORKS AT WINDOW LEVEL



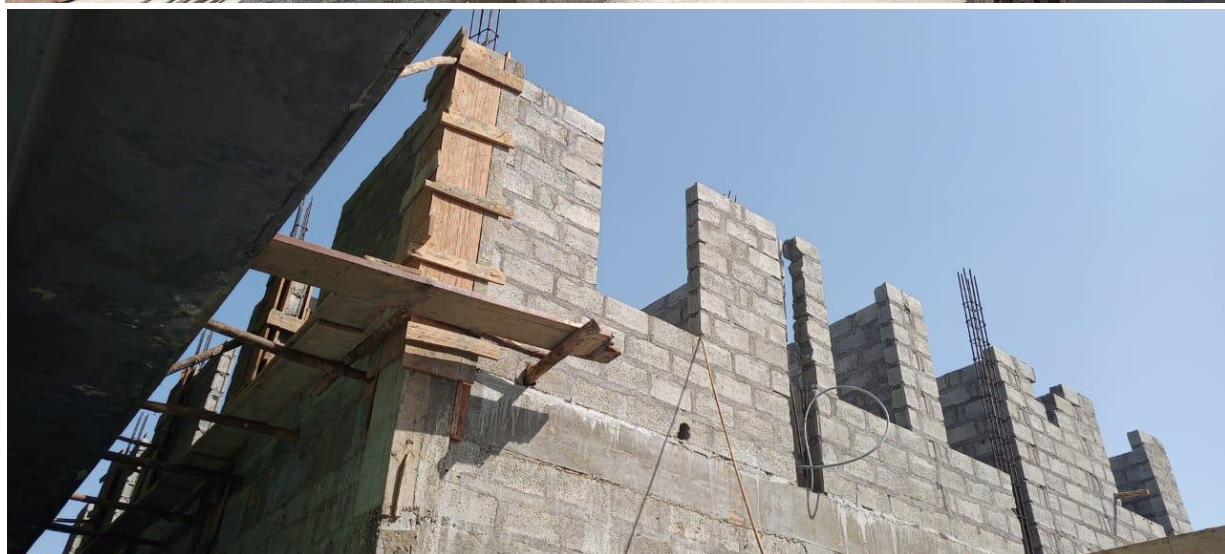


Liberia Regional Design & Construction Group

Paynesville – Joe Bar – Montserrado County

Tel: +231-777599354/+231-775799326/+231-886599354

UPPER FLOOR BLOCK WORK AT LINTEL LEVEL





Liberia Regional Design & Construction Group

Paynesville – Joe Bar – Montserrado County

Tel: +231-777599354/+231-775799326/+231-886599354

INSTALLATION OF REINFORCEMENT BARS FOR BEAMS





Liberia Regional Design & Construction Group

Paynesville – Joe Bar – Montserrado County

Tel: +231-777599354/+231-775799326/+231-886599354

FORM WORKS REINFORCE COLUMNS AND BEAMS/LINTELS INSTALLATION





Liberia Regional Design & Construction Group

Paynesville – Joe Bar – Montserrado County

Tel: +231-777599354/+231-775799326/+231-886599354

UPPER FLOOR BLOCKS WORK COMPLETION



The **Liberia Regional Design and Construction Group** will resume work once the curing period is all reinforcement columns, beams, and lintels is achieved, construction will resume on both the ground and upper floors with the installation of doors and windows, plumbing and electrical systems, tiling, painting, and final finishing works.